

Running Board Instructions

9840

2007-2011 Acura MDX / 2009-2011 Honda pilot

(No Drilling Required)

INSTALLATION PACKAGE

Running Boards	2
Bracket Front (Red)	2
Bracket Middle (White)	2
Brackets Rear (Blue)	2
Support Brackets	6
Bolt Packs	2

Necessary Tools

Measuring Tape
Ratchet wrench with 1/2" socket & Combination wrench

Bracket Bolt Pack

5/16" x 3/4" Hex Bolts	6
5/16" Serrated Flange Nut	10
8M x 25mm Hex Bolts	8
5/16" Small Bolt Plate	2
5/16" Long Bolt Plate (9"	2

Running Board Bolt Pack

5/16" x 3/4" Hex Bolts	12
5/16" Flange Nut	12

STEP One: Determine proper bracket placement

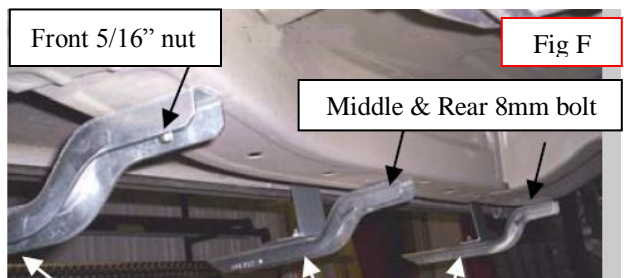
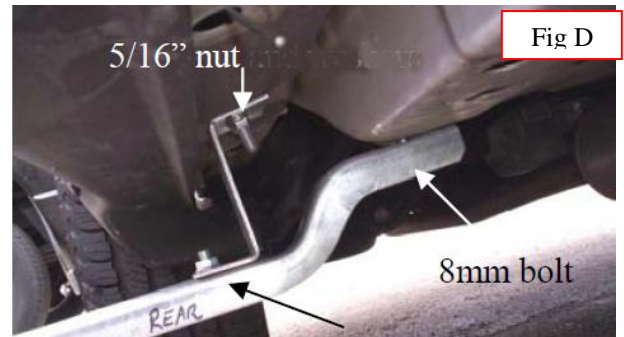
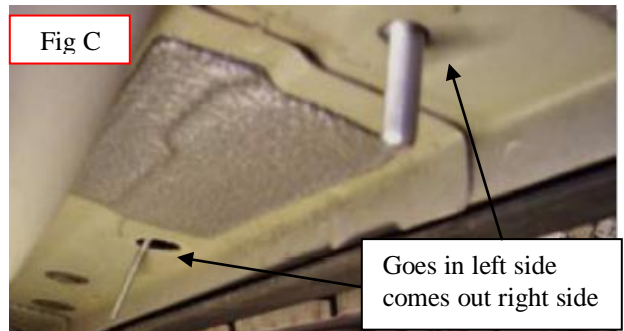
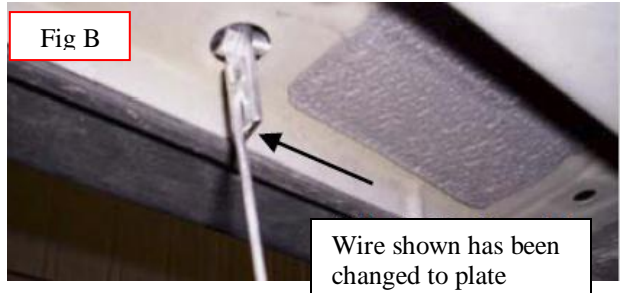
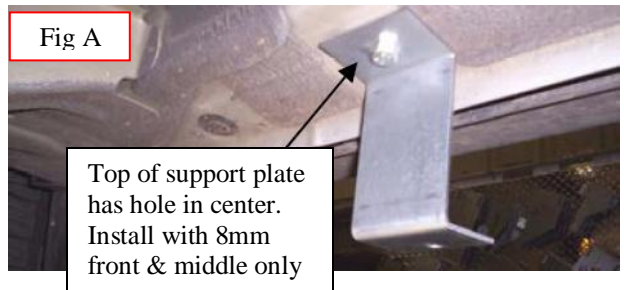
- 1) Brackets will attach using factory mounting locations at approximately 17 1/2", 36" and 58"

STEP Two: Loosely bolt support plates & brackets to vehicles

- 1) Bolt the support brackets to factory holes hand tighten in front and middle locations. Fig A
- 2) Rear support bracket will use included long bolt plate. Remove reward plug and insert the bolt with plate and fish plate through hole and insert down through rear hole. Fig B & C
- 3) Bolt rear support plate to 5/16" bolt plate using 5/16" Flange nut. Fig D
- 4) Now install rear bracket painted blue using 5/16" bolt & nut to mount to support plate & 8mm bolt to mount to vehicle factory 8mm hole in sub frame. Fig D
- 5) Front bracket will install using small bolt plate inserted in sub frame Fig E. Now bolt red front bracket to support plate using 5/16 bolt & nut and use 5/16 flange nut to install bracket to bolt plate installed in sub frame. Final mounting will sit at slight angle. This is OK. Fig F
- 6) Remaining white middle bracket install 5/16 bolt & nut to support plate and use 8mm bolt to attach to factory hole in sub frame.
- 7) Place board on brackets by sliding mounting bolts in slots on underside of boards and allow bolt thread to drop through bracket slots with bracket mounted in position. Only one bolt is required to hold board to bracket. Use two if slot and bracket line up. Install board on brackets to see if board is level.
- 8) Check board for levelness and snug fit to vehicle. Adjust up and down or in and out and fully tighten outside brackets first then adjust inside bracket accordingly. Fully tighten all brackets.

STEP Three: Check Installation

- 1) Check that all brackets are tight before stepping on boards



Use 5/16 bolts & nuts to install bracket to support plate