

# Running Board Instructions

## 4060

1999 –2006 Toyota Tundra  
Standard & Access Cab

( No Drilling Required )

### INSTALLATION PACKAGE

Running Board	2
Brackets	8
Bolt Packs	2

### Necessary Tools

Ratchet wrench with 1/2" & 13 mm socket  
Combination wrench  
Safety glasses

### Bolt Pack Brackets

5/16" Hex bolt mount plate	8
5/16" Serrated Flange Nut	8

### Bolt Pack Running Boards

5/16" x 3/4" Hex Bolt	16
5/16" x 3/4" Serrated Flange Nut	16

### STEP ONE : Determine proper bracket placement Fig A & B & C

1. There are ( 6 ) factory holes. Remove black foam tape from holes ( front to back #2, #3, #4, #6 ) to reveal hole on the underside of vehicle where the brackets need to be placed. (4) brackets per side. Follow Fig A,B,C,D to install 5/16 hex bolt mount plate.
2. Loosely bolt ( hand tighten ) brackets on stud using 5/16" nuts shown Fig E. Be careful not to drop mount plate in hole and lose them.

### STEP TWO : Board Installation & Check.

1. Place board on brackets with bracket mounted in position. Look on underside of board to which channel match up with bracket slots to slide 5/16" bolts down on underside of board so bolt stud will lined up with bracket slots. You will only need one bolt to secure board per bracket. Install board on brackets to see if board is level.
2. Check board for levelness and snug fit to vehicle. Tighten outside brackets first then adjust inside bracket accordingly. Adjust and fully tighten all brackets.
3. Check all bolts to verify completed mounting and tightness. Installation is complete



Fig A

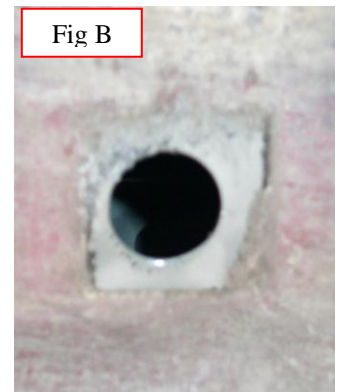


Fig B

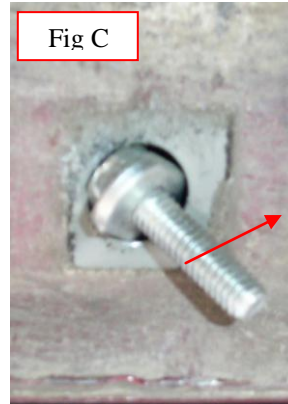


Fig C



Fig D



Fig E



Fig F